

Classified for  
"RESTRICTED USE"  
in New York State  
under 6NYCRR Part 326

DOC ID 563562

**GROUP 3 | 11 FUNGICIDE**



# Armada<sup>®</sup>

ACCEPTED  
VIA NOTIFICATION  
LABEL NOT REVIEWED

## 50 WDG

August 26, 2019

New York State Department  
of Environmental Conservation  
Division of Materials Management  
Pesticide Product Registration

For the enhancement of greener and more dense turfgrass and for the control of listed foliar, stem, and root diseases of turfgrass including institutional, commercial and residential lawns, sod farms, sports fields, parks, municipal grounds and cemeteries, and for control of listed foliar and stem diseases of ornamentals and non-bearing fruit trees grown in interiorscapes (to include shopping malls, shopping centers, hotel lobbies) and residential and commercial landscapes.

**ACTIVE INGREDIENT:**

Trifloxystrobin (CAS No. 141517-21-7)..... 8.33%

Triadimefon (CAS No. 43121-43-3) ..... 41.67%

**OTHER INGREDIENTS:**..... 50.00%

**TOTAL:** 100.00%

EPA Reg. No. 432-1513

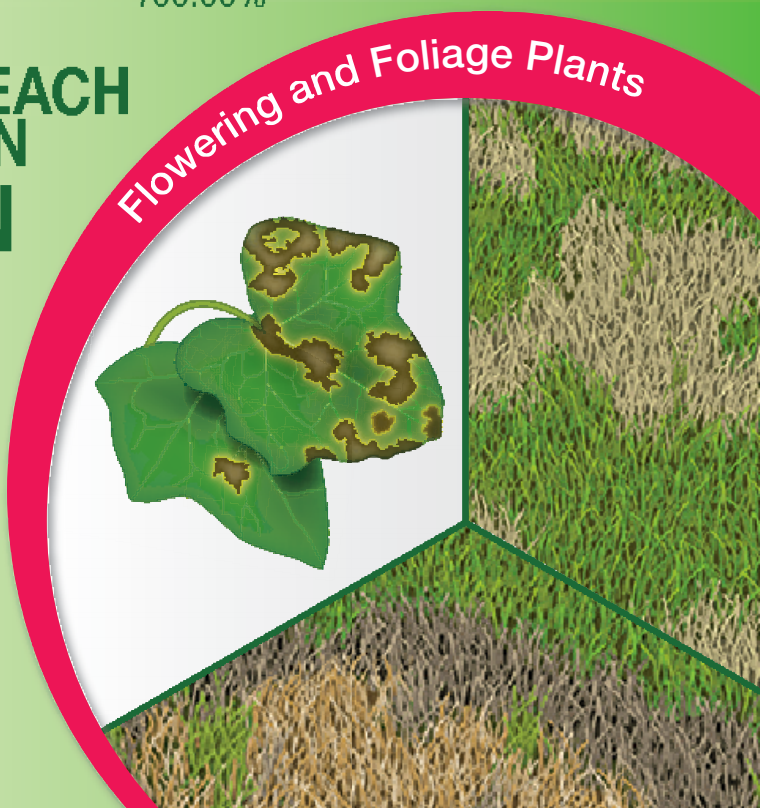
**KEEP OUT OF REACH  
OF CHILDREN  
CAUTION**

See Back Panel for First  
Aid Instructions and  
Booklet for Complete  
Precautionary Statements  
and Directions for Use.

**Net Weight  
2 Pounds**

80224672

84397725C 160513AV2



For MEDICAL and TRANSPORTATION Emergencies ONLY Call 24  
Hours A Day 1-800-334-7577  
For PRODUCT USE Information Call 1-800-331-2867

<b>FIRST AID</b>	
<b>If in eyes:</b>	<ul style="list-style-type: none"> <li>• Hold eye open and rinse slowly and gently with water for 15 to 20 minutes. Remove contact lenses, if present, after the first 5 minutes, then continue rinsing eye.</li> <li>• Call a poison control center or doctor for treatment advice.</li> </ul>
<b>If on skin or clothing:</b>	<ul style="list-style-type: none"> <li>• Take off contaminated clothing.</li> <li>• Rinse skin immediately with plenty of water for 15 to 20 minutes.</li> <li>• Call a poison control center or doctor for treatment advice.</li> </ul>
<b>If swallowed:</b>	<ul style="list-style-type: none"> <li>• Call a poison control center or doctor immediately for treatment advice.</li> <li>• Have person sip a glass of water if able to swallow.</li> <li>• Do not induce vomiting unless told to do so by a poison control center or doctor.</li> <li>• Do not give anything to an unconscious person.</li> </ul>
<b>If inhaled:</b>	<ul style="list-style-type: none"> <li>• Move person to fresh air.</li> <li>• If person is not breathing, call 911 or an ambulance, then give artificial respiration, preferably mouth to-mouth if possible.</li> <li>• Call a poison control center or doctor for further treatment advice.</li> </ul>
<p>Have the product container or label with you when calling a poison control center or doctor or going for treatment. You may also contact 1-800-334-7577 for emergency medical treatment.</p>	
<p><b>Note to Physician:</b> If ingested, induce emesis or lavage stomach. Treat symptomatically.</p>	

## **PRECAUTIONARY STATEMENTS**

### **HAZARDS TO HUMANS AND DOMESTIC ANIMALS**

#### **CAUTION**

Causes moderate eye irritation. Harmful if swallowed, inhaled or absorbed through the skin. Prolonged or frequently repeated skin contact may cause allergic reactions in some individuals. Avoid breathing dust or spray mist. Avoid contact with eyes, skin or clothing. Wash thoroughly with soap and water after handling. Remove contaminated clothing and wash clothing before reuse.

#### **Personal Protective Equipment (PPE)**

##### **Applicators and other handlers must wear:**

- Long-sleeved shirt and long pants.
- Chemical-resistant gloves made of waterproof material such as neoprene, butyl rubber, barrier laminate or nitrile rubber when mixing/loading, when

using handheld equipment or handheld nozzles.

- Shoes plus socks
- Chemical-resistant apron, when mixing/loading or cleaning spills or equipment.

See engineering controls for additional requirements.

Discard clothing and other absorbent materials that have been drenched or heavily contaminated with this product's concentrate.

Do not reuse them.

Follow manufacturer's instructions for cleaning/maintaining PPE. If no such instructions exist for washables, use detergent and hot water. Keep and wash PPE separately from other laundry.

### **Engineering Control Statements**

When handlers use closed systems, enclosed cabs or aircraft in a manner that meets the requirements listed in the Worker Protection Standard (WPS) for agricultural pesticides [40 CFR 170.240(d)(4-6)], the handler PPE requirements may be reduced or modified as specified in the WPS.

### **User Safety Recommendations**

Users should:

- Wash hands thoroughly with soap and water before eating, drinking, chewing gum, using tobacco or using the toilet.
- Remove clothing/PPE immediately if pesticide gets inside. Then wash thoroughly and put on clean clothing.
- Remove PPE immediately after handling this product. Wash the outside of gloves before removing. As soon as possible, wash thoroughly and change into clean clothing.

### **ENVIRONMENTAL HAZARDS**

This pesticide is toxic to fish and aquatic invertebrates. Do not apply directly to water or to areas where surface water is present or to intertidal areas below the mean high water mark. Drift and runoff may be hazardous to aquatic organisms in neighboring areas. Do not contaminate water when disposing of equipment wash water or rinsate.

### **Ground Water Advisory**

The active ingredients in this product have properties and characteristics associated with chemicals detected in ground water. The use of this chemical in areas where soils are permeable, particularly where the water table is shallow may result in ground water contamination.

Do not make applications when weather conditions favor drift from target area.

### **PHYSICAL OR CHEMICAL HAZARDS**

Do not use, pour, spill or store near heat or open flame.

### **DIRECTIONS FOR USE**

**It is a violation of federal law to use this product in a manner inconsistent with its labeling.**

Do not apply this product in a way that will contact workers or other persons,

either directly or through drift. Only protected handlers may be in the area during application. For any requirements specific to your State or Tribe, consult the agency responsible for pesticide regulation.

### **AGRICULTURAL USE REQUIREMENTS**

Use this product only in accordance with its labeling and with the Worker Protection Standard, 40 CFR part 170. This Standard contains requirements for the protection of agricultural workers on farms, forests, nurseries and greenhouses, and handlers of agricultural pesticides. It contains requirements for training, decontamination, notification and emergency assistance. It also contains specific instructions and exceptions pertaining to the statements on this label about personal protective equipment (PPE) and restricted-entry interval. The requirements in this box only apply to uses of this product that are covered by the Worker Protection Standard.

Do not enter or allow worker entry into treated areas during the restricted-entry interval (REI) of 12 hours.

**Exception:** If the product is applied by drenching, the Worker Protection Standard, under certain circumstances, allows workers to enter the treated area if there will be no contact with anything that has been treated.

PPE required for early entry to treated areas that is permitted under the Worker Protection Standard and that involves contact with anything that has been treated, such as plants, soil or water is:

- Long sleeved shirt and long pants
- Chemical-resistant gloves made of any waterproof material
- Shoes plus socks

### **NON-AGRICULTURAL USE REQUIREMENTS**

The requirements in this box apply to uses of this product that are NOT within the scope of the Worker Protection Standard for agricultural pesticides (40 CFR part 170). The WPS applies when this product is used to produce agricultural plants on farms, forests, nurseries or greenhouses.

Do not enter treated areas without protective clothing until sprays have dried.

## **PRODUCT INFORMATION**

### **Mixing Procedures**

Prepare no more spray mixture than is needed for the immediate operation. Thoroughly clean spray equipment before using this product. Agitation is necessary for proper dispersal of the product. Maintain agitation throughout the spraying operation. Do not let the spray mixture stand overnight in the spray tank. Flush the spray equipment thoroughly following each use and apply the rinsate to a previously treated area.

**ARMADA® 50 WDG Alone:** Add 1/2 of the required water to the mix tank. With the agitator running, add the prescribed dose of **ARMADA 50 WDG** to the tank. Continue agitation while adding the remainder of the water. Begin application of the solution after **ARMADA 50 WDG** has completely dispersed into the mix water. Maintain agitation until all of the mixture has been applied.

**ARMADA 50 WDG+ Tank Mixtures:** Add 1/2 of the required amount of water to the tank mix. Start the agitation running before adding **ARMADA 50 WDG** and any tank mix partner(s). In general, tank mix partners must be added in this order: (1) products packaged in water soluble packaging, wettable powders, wettable granules (such as **ARMADA 50 WDG**, (2) liquid flowables, liquids; and (3) emulsifiable concentrates. Always allow each tank mix partner to become fully dispersed before adding the next product. Provide sufficient agitation while adding the remainder of the water. Maintain agitation until all of the mixture has been applied.

If using **ARMADA 50 WDG** in a tank mixture, observe all restrictions, directions for use, crop/sites, use rates, dilution ratios, precautions and limitations that appear on the tank mix product label. Do not exceed labeled dosage rate and follow the most restrictive label precautions and limitations. This product must not be mixed with any product that prohibits such mixing. Tank mixtures or other applications of products referenced on this label are permitted only in those states in which the referenced products and uses are registered.

**ARMADA 50 WDG** is compatible with most insecticide, fungicide and foliar nutrient products. However, the compatibility of **ARMADA 50 WDG** with tank mix partners must be tested before use.

To determine biological compatibility with other products, mix the products in the desired proportions, spray on target plants and observe for phytotoxicity seven days after the application.

**Use with additives:** Use of spray additives is not required. Any spray additive must be evaluated prior to use. Do not use in conjunction with organosilicate-based products or plant injury may occur. Label directions are based on data with no additives.

**Chemigation:** Do not apply this product through any type of irrigation system.

**Aerial Application:** Do not apply by aerial application.

**Resistance Management:** **ARMADA 50 WDG** contains the strobilurin class of chemistry, which exhibits no known cross-resistance to other chemical classes including sterol inhibitors, dicarboximides, benzimidazoles, anilinopyrimidines or phenylamides. However, certain fungal pathogens are known to develop resistance to products used repeatedly. Because resistance development cannot be predicted, the use of this product must conform to resistance management strategies. Such strategies may include rotating and/or tank mixing with products having different modes of action; or limiting the total number of applications per season. Bayer encourages responsible product stewardship to ensure effective long-term control of the fungal diseases on this label. See specific directions in the turf section and the ornamentals section.

## **TURFGRASS DISEASE CONTROL**

**ARMADA 50 WDG** is a preventive and curative fungicide that may be applied to turf sites including institutional, commercial and residential lawns, sod farms, sports fields, parks, municipal grounds and cemeteries.

**ARMADA 50 WDG** is a broad spectrum fungicide for the control of dollar spot (*Sclerotinia homoeocarpa*), brown patch (*Rhizoctonia solani*), anthracnose (*Colletotrichum graminicola*), red thread (*Corticium fuciforme*), pink patch (*Limonomyces roseipellis*), leaf spot (*Bipolaris* spp., *Drechslera* spp.), gray leaf spot

(*Pyricularia grisea*), rust (*Puccinia* spp.), pink snowmold (*Microdochium nivale*), microdochium patch (*Microdochium nivale*), southern blight (*Sclerotium rolfsii*), stripe smut (*Ustilago striiformis*), and summer patch (*Magnaporthe poae*). When conditions are favorable for Pythium blight (*Pythium* spp.), mix a Pythium control fungicide with **ARMADA 50 WDG**.

1. **ARMADA 50 WDG** IS BEST USED IN A PREVENTIVE DISEASE CONTROL PROGRAM.
2. Apply listed rate in 1-2 gallons of water per 1,000 sq ft to ensure thorough coverage. For soil-borne diseases, such as summer patch and take-all patch, use sufficient water to reach the crown and upper root zone or irrigate immediately after application with sufficient water to move the active ingredient down into the crown and root zone of the turf.
3. Apply after mowing OR allow sprayed area to completely dry before mowing.
4. For control of both foliar and soil-borne diseases, allow sprayed area to completely dry before irrigation.
5. Under conditions optimum for high disease pressure, use the higher rate and the shorter interval.
6. For optimum turf quality and disease control, use **ARMADA 50 WDG** in conjunction with turf management practices that promote good health and optimum disease control.
7. Before use of any fungicide, proper diagnosis of the organism causing the disease is important. Use of diagnostic kits or other means of identification of the disease organism is essential to determine the best control measures.

### **Plant Health**

Apply **ARMADA 50 WDG** at 1.2 to 1.5 oz/1,000 sq ft to sod production of warm season grasses such as St. Augustine, centipede and Bermudagrass. The following plant health enhancements will be seen 30 to 60 days after application of **ARMADA 50 WDG**; visible leaf greenness and density. Sod laid under shade trees also benefits in turf quality when this application is made prior to transfer. Apply **ARMADA 50 WDG** at 1.2-1.5 oz /1,000 sq ft 15-30 days pre-harvest for plant health benefits.

#### **Resistance Management for Turfgrass**

Do not apply more than 2 sequential **ARMADA 50 WDG** fungicide applications for gray leaf spot control. Do not apply more than 3 sequential applications of **ARMADA 50 WDG** fungicide for all other diseases. Alternate with a fungicide having a different mode of action.

### **Tank Mixes**

For more broad-spectrum control **ARMADA 50 WDG** can be tank mixed with other fungicides. Check compatibility before tank mixing.

**ARMADA 50 WDG** CAN BE APPLIED TO ALL MAJOR TURFGRASS SPECIES. RATES ARE DEPENDENT UPON DISEASE AND THE ORGANISM THAT IT IS INCITED BY.

<b>TURFGRASS DISEASES CONTROLLED WITH ARMADA 50 WDG</b>			
<b>DISEASE</b>	<b>ARMADA 50 WDG</b>	<b>OZ OF ARMADA 50 WDG PER 1,000 SQ FT</b>	<b>APPLICATION INTERVAL / TIMING</b>
Dollar Spot	Apply when conditions are favorable for disease development.	0.6-1.5	14-28 days
Brown Patch	Apply when conditions are favorable for disease development.	0.6-1.5	14-28 days
Leaf Spot	Apply when conditions are favorable for disease development.	0.6	14 days
	For curative applications.	1.2-1.5	21-28 days
Anthracnose	Apply when conditions are favorable for disease development.	0.6-1.5	14-28 days
Summer Patch	Make initial application when the soil temperatures reach 65°F. Subsequent applications at 21-28 day interval. Do not make more than 3 sequential applications.	1.2-1.5	21-28 days
Gray Leaf Spot	Apply when conditions are favorable for disease development.	0.6-1.5	14-28 days
Red Thread, Pink Patch	Apply when conditions are favorable for disease development.	0.6-1.5	14-28 days
Rust	Apply when conditions are favorable for disease development.	0.6-1.5	14-28 days
Southern Blight	Preventive applications only	0.6-1.5	Repeat at 14-day intervals.

(cont.)

<b>TURFGRASS DISEASES CONTROLLED WITH ARMADA 50 WDG (continued)</b>			
<b>DISEASE</b>	<b>ARMADA 50 WDG</b>	<b>OZ OF ARMADA 50 WDG PER 1,000 SQ FT</b>	<b>APPLICATION INTERVAL / TIMING</b>
Stripe Smut	Make the first application in the spring just before the turf breaks dormancy followed by a second application just prior to the summer heat stress period and a third application when the cool night-time temperatures of the late summer or early fall return.	0.6	3 applications / season Spring, Early Summer, and Early Fall
Microdochium Patch	Apply when conditions are favorable for disease development.	1.2-1.5	Fall-Early Spring
Pink Snow Mold	Apply one application in late fall before snow cover or early spring after snow melts. Do not apply on top of snow.	1.2-1.5	Late Fall
Take-All Patch	Apply 1 to 2 applications preventatively.	1.2-1.5	28 days
Necrotic Ring Spot	Apply 1 to 2 applications preventatively.	1.2-1.5	28 days
Large Patch	Apply 1 to 2 applications preventatively when conditions are favorable for disease development.	1.2-1.5	28 days

(cont.)



TURFGRASS DISEASES CONTROLLED WITH ARMADA 50 WDG (continued)			
DISEASE	ARMADA 50 WDG	OZ OF ARMADA 50 WDG PER 1,000 SQ FT	APPLICATION INTERVAL / TIMING
Fairy Ring	First application is pre- scribed in the spring when 5 day average daily soil temperatures taken at 2 inches are 60-65°F. Make applications in 2 gallons water/1,000 sq ft. Water in application with 1/8 to 1/4 inch of irrigation within 6-8 hours after ap- plication. Tank mixing with wetting agent will decrease the fungicidal efficacy of <b>AR- MADA 50 WDG</b> . Apply wetting agents 2 weeks after the <b>ARMADA 50 WDG</b> application on rou- tine schedule for wetting agents.	1.2-1.5	14-28 days

For preventive applications, apply when conditions are favorable for disease. Use the higher rate/shorter interval (if a range is given) for curative applications or under severe disease conditions.

### Maximum Use Rates

For turfgrass, do not exceed a maximum of 207 oz of **ARMADA 50 WDG** per acre per year (4.76 oz/1000 sq ft).

### ORNAMENTAL DISEASE CONTROL

**ARMADA 50 WDG** is a broad-spectrum systemic fungicide for the control of listed foliar and stem diseases of ornamentals and non-bearing fruit trees grown in interiorscapes (to include shopping malls, shopping centers, hotel lobbies) and residential and commercial landscapes.

### Use restrictions for **ARMADA 50 WDG** on Ornamentals.

- Applications with hose-end sprayers are permitted only for outdoor use on ornamentals.
- Do not use **ARMADA 50 WDG** on bearing fruit trees. **ARMADA 50 WDG** may be used on non-bearing trees. Non-bearing trees are defined as trees that will not bear fruit until at least 1 year after treatment.

<b>Conversion Table for ARMADA 50 WDG: cup, gram, ounce</b>	
1/4 Cup = 30.5 grams = 1.07 oz	1/3 Cup = 40.7 grams = 1.43 oz
1/2 Cup = 61 grams = 2.14 oz	3/4 Cup = 91.5 grams = 3.21 oz
1 Cup = 122 grams = 4.28 oz	

### **Interiorscape, Commercial and Residential Landscape Applications**

**Foliar Diseases: ARMADA 50 WDG** will control foliar diseases of ornamental plants when applied as a foliar spray to the plant species listed on this label. Apply 3 to 9 oz **ARMADA 50 WDG** per 100 gallons of spray solution. Apply as a full-coverage spray to the point of drip and repeat at 14 to 28 day intervals until the threat of disease is over. Begin applications when conditions are favorable for disease development and continue until the threat of disease is over. Use higher rates or shorter intervals under high disease pressure. Do not exceed a maximum of 207 oz of **ARMADA 50 WDG** per acre per year (4.76 oz/ 1000 sq ft).

<b>PLANTS</b>				
<b>FLOWERING AND FOLIAGE PLANTS</b>				
Ageratum	Cineraria	Geranium	Marigold	Salvia
Aster	Crassula	Gerbera	Nephthytis	Sedum
Begonia	Dahlia	Grape Leaf Ivy	Pansy	Snapdragon
Calendula	Daisy	Hollyhock	Petunia	Sunflowers
Canna	Delphinium	Hydrangea	Phlox	Zinnia
Carnation	Dianthus	Iris	Poinsettia	
Chrysanthemum	Four O'Clock	Kalanchoe	Rose	
<b>ORNAMENTAL SHRUBS, TREES AND NON-BEARING FRUIT TREES</b>				
Amelanchier	Crape myrtle	Juniper	Pittosporum	
Apple (non-bearing)	Cypress,	Leucothoe	Plum (non-bearing)	
Azalea	Leyland	Lilac	Potentilla	
Barberry	Dogwood	Mock-Orange	Privet	
Buckthorn	Euonymus	Mountain Laurel	Pyracantha	
Camellia	Gardenia	Ninebark	Rhododendron	
Cedar	Hawthorn	Paulownia	Spirea	
Cherry(non-bearing)	Hemlock	Pear (non-bearing)	Viburnam	
Crabapple	Holly	Photinia	Vitex	
<b>SHADE TREES</b>				
Ash	Chestnut	Locust	Poplar	Willow
Aspen	Cottonwood	Maple	Russian Olive	
Birch	Elm	Oak	Sycamore	
Buckeye	Fir	Pine	Walnut	

**NOTICE TO USER:** Plant tolerance to **ARMADA 50 WDG** has been found to be acceptable on all ornamentals that it has been tested on with the exception of Petunia, Violets and New Guinea impatiens. Due to the large number of species and varieties of ornamentals plants, it is impossible to test every one for tolerance to **ARMADA 50 WDG**. Neither the Manufacturer nor the Seller has determined whether or not **ARMADA 50 WDG** can be used safely on ornamental plants not specified on this label. The professional user must determine if **ARMADA 50 WDG** can be used safely prior to commercial use. In a small area test the labeled rates on a small number of plants for phytotoxicity prior to widespread use. Before using **ARMADA 50 WDG** in tank mixture with other products, test the mixture on a small number of plants for phytotoxicity prior to widespread use.

COMMON AND SCIENTIFIC NAMES OF DISEASES CONTROLLED BY ARMADA 50 WDG		
COMMON NAME	SCIENTIFIC NAME	
Anthracnose	<i>Apiognomonia veneta</i> <i>Colletotrichum gloeosporioides</i> <i>Discula quercina</i>	<i>Gloeosporium aridum</i> <i>Glomerella cingulata</i>
Black spot	<i>Diplocarpon rosae</i>	
Downy mildew	<i>Peronospora</i> spp.	
Leaf spot	<i>Cercospora</i> spp. <i>Entomosporium</i> spp.	<i>Septoria</i> spp.
Powdery mildew	<i>Erysiphe</i> spp. <i>Microsphaera</i> spp. <i>Oidium</i> spp.	<i>Podosphaera</i> spp. <i>Sphaerotheca</i> spp. <i>Uncinula</i> spp.
Rust	<i>Coleosporium</i> spp. <i>Gymnosporangium</i> spp. <i>Melampsoridium</i> spp.	<i>Phragmidium</i> spp. <i>Puccinia</i> spp. <i>Uromyces</i> spp.
Scab	<i>Cladosporium</i> spp.	<i>Venturia inaequalis</i>

### Maximum Use Rates in Ornamentals

For ornamental plants do not exceed a maximum of 207 oz of **ARMADA 50 WDG** per acre per year (4.76 oz/1000 sq ft).

## Conifer and Christmas Tree Applications

PRESCRIBED APPLICATIONS		
Christmas Trees (Except Concolor Fir)	Stem and Cone Rusts <i>Cronartium</i> spp. (Fusiform) <i>Peridermium</i> spp. <i>Endocronartium Harknessii</i> (Gall) Tip blight <i>Sirococcus strobilinus</i> Lophodermium Needlecast <i>Lophodermium pinestri</i>	9 oz/A
<p>Apply specified dosage per acre or per 100 gal of water as a full coverage, dilute spray as needed. Full coverage of the trees is essential for maximum control. Use of nonionic spray adjuvant is prescribed. Time applications appropriately for the specific disease being controlled. A maximum of 207 oz of <b>ARMADA 50 WDG</b> may be applied per acre per season (4.76 oz/1000 sq ft). For rusts, begin applications when the needles break through the fascicle sheath. Make additional applications at 14 to 21-day intervals. Stop when galls become pale to white color.</p> <p>For tip blight, begin applications to coincide with bud break. Make two additional applications at 14-day intervals.</p> <p>For Lophodermium needlecast, begin applications to coincide with spore release, normally beginning in mid-July and ending in mid-October. Make applications at 21-day intervals. Extend interval to 28 days if spore release is light or dry weather is expected.</p>		
Pine (Seedlings) (Except California)	Pine Rust (Fusiform rust)	9 oz/A
<p>Begin application prior to infection period and repeat as necessary at 14 to 21-day intervals depending upon disease pressure. Use lower rates in areas of low disease incidence and higher rates in areas of severe disease incidence. A maximum of 207 oz of <b>ARMADA 50 WDG</b> may be applied per acre per season (4.76 oz/1000 sq ft). A spreader-sticker is needed to help adhere spray solution to the pine trees.</p> <p>Do not apply <b>ARMADA 50 WDG</b> on recent grafted scions until one year after grafting.</p>		

### Restrictions for Applications on Conifers and Christmas Trees

1. For ground application, use a minimum of 50 gals of water/A.
2. To avoid spray drift, do not apply when conditions favor drift beyond the target area. Avoid spray overlap. For information on spray equipment and calibration, consult sprayer manufacturers and state recommendations. For specific local directions and spray schedules, consult the current state agricultural experiment station recommendations.
3. Use of spray additives are not required. Any spray additive must be evaluated prior to use. Do not use in conjunction with organosilicate-based products or plant injury may occur. Label directions are based on data with no additives.

## Resistance Management for Ornamentals

**ARMADA 50 WDG** contains a site-specific fungicide belonging to the strobilurin class of chemistry. Fungal pathogens are known to develop resistance to fungicides with a specific mode of action. When site-specific fungicides are used without a clear resistance management strategy, resistance development may be rapid, particularly with greenhouse use.

**ARMADA 50 WDG** exhibits cross-resistance to other strobilurins and fungicides within the **Strobilurin Type Action and Resistance** group (**STAR** compounds), but there is no known cross-resistance to fungicides of other classes including sterol inhibitors, dicarboximides, benzimidazoles, anilinopyrimidines, phenylpyrroles or phenylamides.

Many plant pathogens have a history of fungicide resistance development. To minimize the risk of resistance development to **ARMADA 50 WDG**, the following practices are prescribed.

1. Use **ARMADA 50 WDG** preventively.
2. For Leaf Spots and diseases other than Powdery Mildew, Downy Mildew and Botrytis:
  - Use no more than two (2) applications of **ARMADA 50 WDG** before rotating to another effective product that is not in the strobilurin class of chemistry for two (2) applications before rotating back to **ARMADA 50 WDG**.

**OR**

- Rotate to another fungicide of nonstrobilurin chemistry after each **ARMADA 50 WDG** application.
3. For Powdery Mildew, Downy Mildew, and Botrytis:
    - Between each **ARMADA 50 WDG** application, make two (2) applications of a fungicide of nonstrobilurin chemistry before rotating back to **ARMADA 50 WDG**.

**OR**

- Rotate to another fungicide of nonstrobilurin chemistry after each **ARMADA 50 WDG** application.
4. Make no more than four (4) foliar applications of **ARMADA 50 WDG** per season for each at risk pathogen.

## STORAGE AND DISPOSAL

Do not contaminate water, food or feed by storage or disposal.

**Pesticide Storage:** Store in a cool, dry place and in such a manner as to prevent cross contamination with other pesticides, fertilizers, food and feed. Store in original container and out of the reach of children, preferably in a locked storage area.

Handle and open container in a manner as to prevent spillage. If the container is leaking or material spilled for any reason or cause, carefully sweep material into a pile. Refer to Precautionary Statements on label for hazards associated with the handling of this material. Do not walk through spilled material. Material that cannot be used as directed should be disposed of as directed below. In spill or leak incidents, keep unauthorized people away.

**Pesticide Disposal:** Pesticide wastes may be toxic. Improper disposal of

(cont.)

## **STORAGE AND DISPOSAL** (continued)

unused pesticide, spray mixture or rinse water is a violation of federal law. If these wastes cannot be used according to label instruction, contact your State Pesticide or Environmental Control Agency or the Hazardous Waste representative at the nearest EPA Regional Office for guidance in proper disposal methods.

**Container Handling:** Non-refillable container. Do not reuse or refill this container. Triple rinse container (or equivalent) promptly after emptying. Triple rinse as follows: Empty the remaining contents into application equipment or a mix tank. Fill the container 1/4 full with water and recap. Shake for 10 seconds. Pour rinsate into application equipment or a mix tank or store rinsate for later use or disposal. Drain for 10 seconds after the flow begins to drip. Repeat this procedure two more times. Offer for recycling, if available or dispose of empty carton in a sanitary landfill or by incineration, or, if allowed by State and local authorities, by burning. If burned, stay out of smoke.

## **IMPORTANT: READ BEFORE USE**

Read the entire Directions for Use, Conditions, Disclaimer of Warranties and Limitations of Liability before using this product. If terms are not acceptable, return the unopened product container at once.

By using this product, user or buyer accepts the following Conditions, Disclaimer of Warranties and Limitations of Liability.

**CONDITIONS:** The directions for use of this product are believed to be adequate and must be followed carefully. However, it is impossible to eliminate all risks associated with the use of this product. Ineffectiveness plant injury or other property damage, or other unintended consequences may result because of factors beyond the control of Bayer CropScience LP as weather conditions, presence of other materials, or the manner of use or application.

**DISCLAIMER OF WARRANTIES:** TO THE EXTENT CONSISTENT WITH APPLICABLE LAW, BAYER CROPSCIENCE LP MAKES NO OTHER EXPRESS OR IMPLIED WARRANTY. No agent of Bayer CropScience LP is authorized to make any warranties beyond those contained herein or to modify the warranties contained herein. TO THE EXTENT CONSISTENT WITH APPLICABLE LAW, BAYER CROPSCIENCE LP DISCLAIMS ANY LIABILITY WHATSOEVER FOR CONSEQUENTIAL, SPECIAL, OR INDIRECT DAMAGES RESULTING FROM THE USE, HANDLING, OR APPLICATION OF THIS PRODUCT.

**LIMITATIONS OF LIABILITY:** TO THE EXTENT CONSISTENT WITH APPLICABLE LAW, THE EXCLUSIVE REMEDY OF THE USER OR BUYER FOR ANY AND ALL LOSSES, INJURIES OR DAMAGES RESULTING FROM THE USE OR HANDLING OF THIS PRODUCT, WHETHER IN CONTRACT, WARRANTY, TORT, NEGLIGENCE, STRICT LIABILITY OR OTHERWISE, SHALL NOT EXCEED THE PURCHASE PRICE PAID, OR AT BAYER CROPSCIENCE LP'S ELECTION, THE REPLACEMENT OF PRODUCT.

Bayer (reg'd), the Bayer Cross (reg'd), and Armada® are registered trademarks of Bayer.

**Produced for:  
Bayer Environmental Science  
A Division of Bayer CropScience LP  
5000 CentreGreen Way, Suite 400  
Cary, NC 27513**

**Bayer**





GROUP 3 | 11 FUNGICIDE



# Armada<sup>®</sup> 50 WDG

For the enhancement of greener and more dense turfgrass and for the control of listed foliar, stem, and root diseases of turfgrass including institutional, commercial and residential lawns, sod farms, sports fields, parks, municipal grounds and cemeteries, and for control of listed foliar and stem diseases of ornamentals and non-bearing fruit trees grown in interiorscapes (to include shopping malls, shopping centers, hotel lobbies) and residential and commercial landscapes.

**ACTIVE INGREDIENT:**

Trifloxystrobin (CAS No. 141517-21-7).....	8.33%
Triadimefon (CAS No. 43121-43-3) .....	41.67%

<b>OTHER INGREDIENTS:</b> .....	50.00%
---------------------------------	--------

<b>TOTAL:</b>	100.00%
---------------	---------

EPA Reg. No. 432-1513

## KEEP OUT OF REACH OF CHILDREN CAUTION

For **PRODUCT USE** Information Call 1-800-331-2867  
For **MEDICAL** And **TRANSPORTATION** Emergencies **ONLY**  
Call 24 Hours A Day 1-800-334-7577

See Back Panel for First Aid Instructions and Booklet for Complete  
Precautionary Statements and Directions for Use.

This product contains a chemical known to the state of  
California to cause developmental or reproductive harm.

# Bayer

Net Weight  
**2 Pounds**  
**80224672**

84397725C 160513AV2

Produced for:  
Bayer Environmental Science  
A Division of Bayer CropScience LP  
5000 CentreGreen Way, Suite 400  
Cary, NC 27513

PULL HERE TO OPEN

